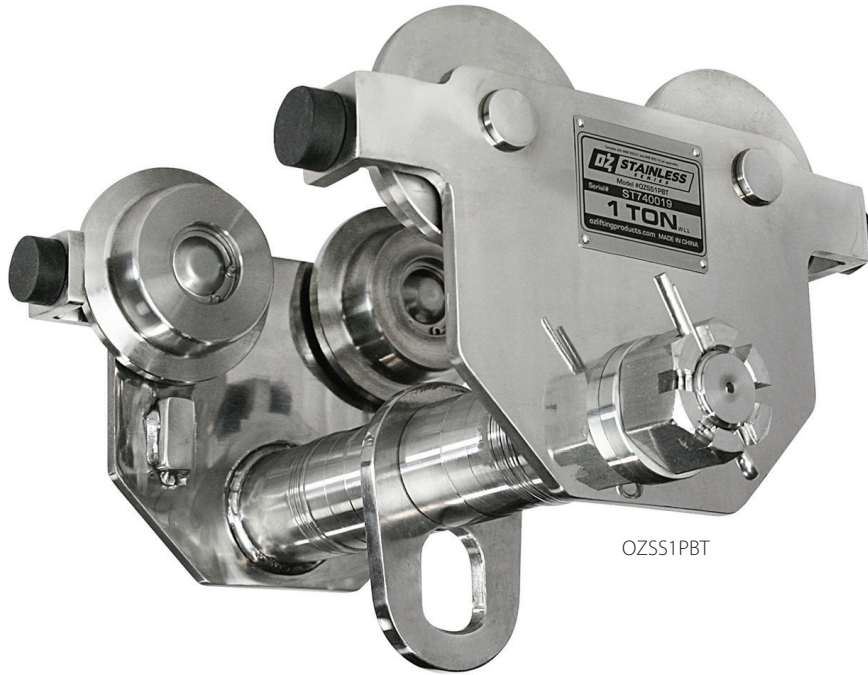


STAINLESS STEEL PUSH BEAM TROLLEY

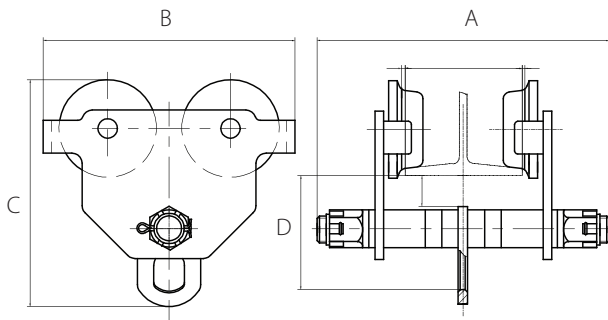


OZSS1PBT

Features

- Stainless Steel Type 304 Construction for Corrosion Resistance
- Fits to most I, S, and W-Beams
- Individual Test Certificate and Serial Number
- Anti-Drop Plate
- Stainless Steel ID Tag
- Precision Ball Bearing Trolley Wheels

Standards - CE, AS1418.2, ASME B30.10 (For use with manual or powered hoists)



	OZSS1PBT	OZSS2PBT
Safe working load (lbs)	2,000	4,000
Adjustable flange width (in)	2.5–8	3.5–8
Max flange thickness (in)	1.06	1.06
Product dimensions (in)	A	13
	B	9.68
	C	9
	D	5
Minimum radius curve (ft)	3.28	3.60
Net weight (lbs)	26.5	43

