

PUSH BEAM TROLLEY USA



Features

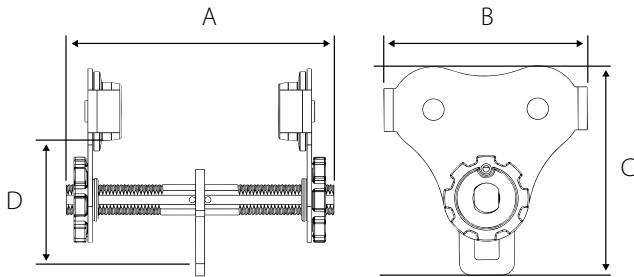
- Fastest adjusting trolley requiring no tools to install
- Lightweight robust construction
- ROHS compliant zinc plated finish
- Glow in the dark decals
- Fits most I, S, and W-Beams
- Precision ball bearing trolley wheels
- Side plates protect trolley wheels
- Anti-drop plate
- Individual test certificate and serial number



Standards - ASME B30.11, ASME B30.16



OZ1PBTA
[PATENTED]



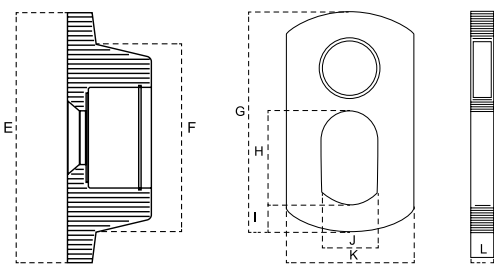
FALL PROTECTION
models available
Contact OZ Lifting Products
for more information

*12" and 16" inch rods available for OZ05PBTA and OZ1PBTA

| | OZ05PBTA | OZ05PBTA-12 | OZ05PBTA-16 | OZ1PBTA | OZ1PBTA-12 | OZ1PBTA-16 | OZ2PBTA | OZ3PBTA |
|------------------------------|-----------|-------------|-------------|-----------|------------|------------|-----------|-----------|
| Capacity (tons) | .5 | .5 | .5 | 1 | 1 | 1 | 2 | 3 |
| Adjustable flange width (in) | 2.52-8.00 | 2.52-12.00 | 2.52-16.00 | 2.75-8.00 | 2.75-12.00 | 2.75-16.00 | 3.75-8.00 | 3.75-8.00 |
| Max Flange Thickness (in) | 1.12 | 1.12 | 1.12 | 1 | 1 | 1 | 1.5 | 1.75 |
| Product dimensions | A | 12.25 | 15.5 | 19.5 | 11 | 15.5 | 19.5 | 14 |
| | B | 8.3 | 8.3 | 8.3 | 10.2 | 10.2 | 10.2 | 12 |
| | C | 8.5 | 8.5 | 8.5 | 9.8 | 9.8 | 9.8 | 11.9 |
| | D | 5 | 5 | 5 | 5.5 | 5.5 | 5.5 | 8.5 |
| Minimum radius curve (ft) | 2.75 | 2.75 | 2.75 | 3.35 | 3.35 | 3.35 | 4.5 | 5 |
| Net weight (lbs) | 16 | 19 | 20 | 26 | 30 | 31 | 45 | 80 |

*Dimensions are for reference only and subject to change without notice.

Wheels & Bail Dimensions



| | OZ05PBTA | OZ1PBTA | OZ2PBTA | OZ3PBTA |
|--------|----------|---------|---------|---------|
| E (in) | 3.25 | 4.00 | 4.5 | 5.75 |
| F (in) | 2.38 | 3.00 | 3.25 | 4.38 |
| G (in) | 4.38 | 5.00 | 6.25 | 6.88 |
| H (in) | 1.50 | 1.88 | 2.25 | 2.5 |
| I (in) | 0.63 | 0.63 | 0.88 | 1.0 |
| J (in) | 1.00 | 1.25 | 1.38 | 1.5 |
| K (in) | 2.25 | 2.50 | 3.13 | 3.5 |
| L (in) | 0.38 | 0.50 | 0.50 | 0.63 |

